



ISETIA

ISETIA **BIM**
VIEWER

The ISETIA BIM Viewer is a free of charge standalone IFC viewer that provides extensive capabilities for analyzing various types of IFC formats. This viewer is particularly notable for its ability to connect to the cloud, offering a free Open BIM platform that enhances its utility in handling IFC files. It's designed to cater to the needs of professionals in the building and construction industry, enabling them to effectively manage and visualize building information models.

The ISETIA BIM Viewer is a free of charge standalone IFC viewer that provides extensive capabilities for analyzing various types of IFC formats. This viewer is particularly notable for its ability to connect to the cloud, offering a free Open BIM platform that enhances its utility in handling IFC files. It's designed to cater to the needs of professionals in the building and construction industry, enabling them to effectively manage and visualize building information models.

Key Features of the ISETIA BIM Viewer include:

1. Comprehensive File Handling: It allows the opening of IFC files, including multiple file opening functionality for ease of use.

2. Advanced Navigation and Interaction: The viewer supports various navigation methods including rotation, zooming, and model moving using mouse controls. It also provides touch screen support with gestures like tap, press and move, and two-finger tap for quick access to certain features.

3. Viewing Options: Users can choose from different view options, including 2D and 3D views, perspective projections, and anti-aliasing options. The 'Fly mode' enables easy movement through the model, particularly useful for large-scale or complex structures.

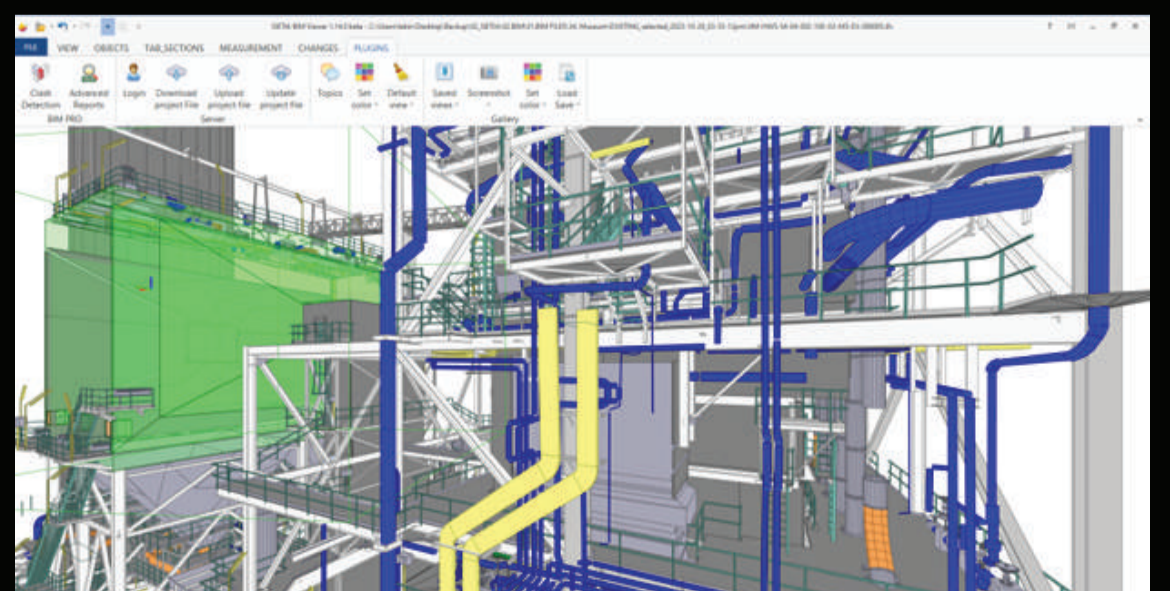
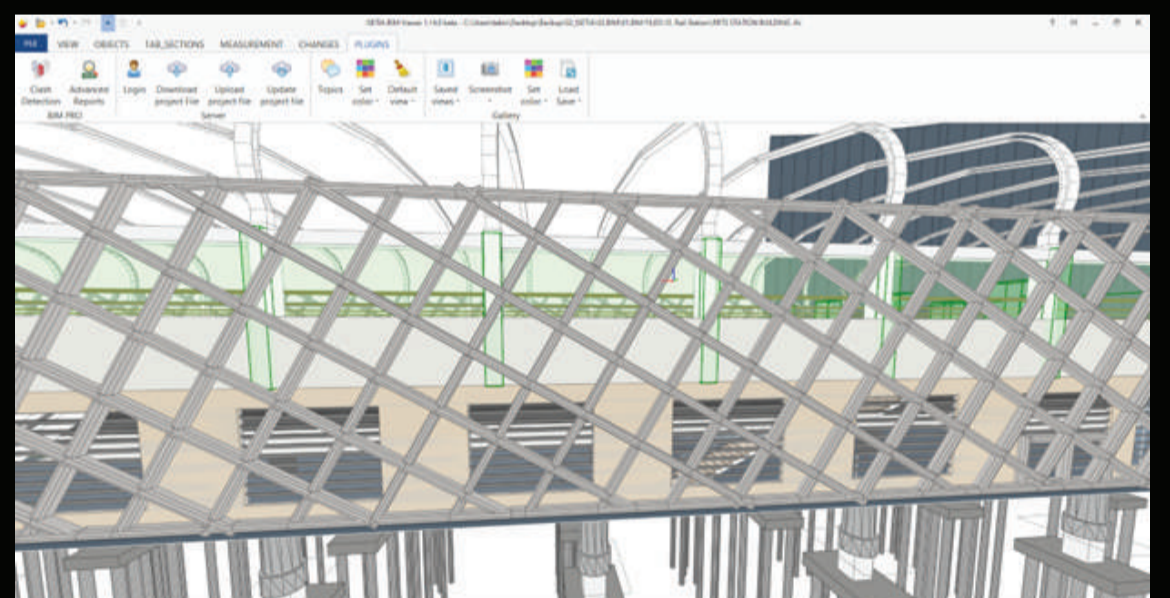
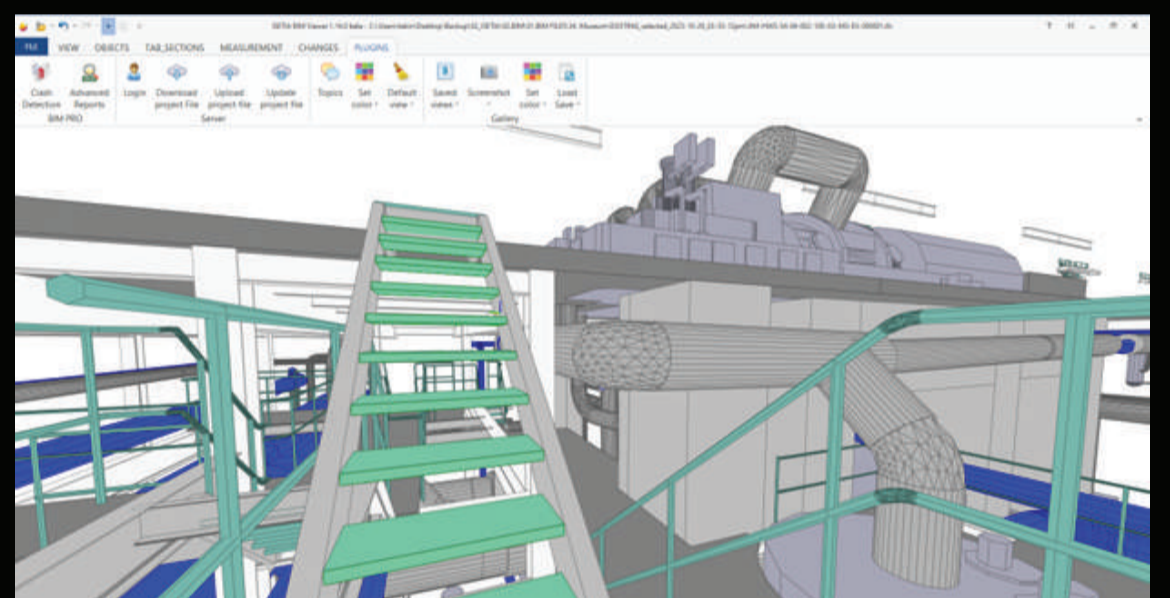
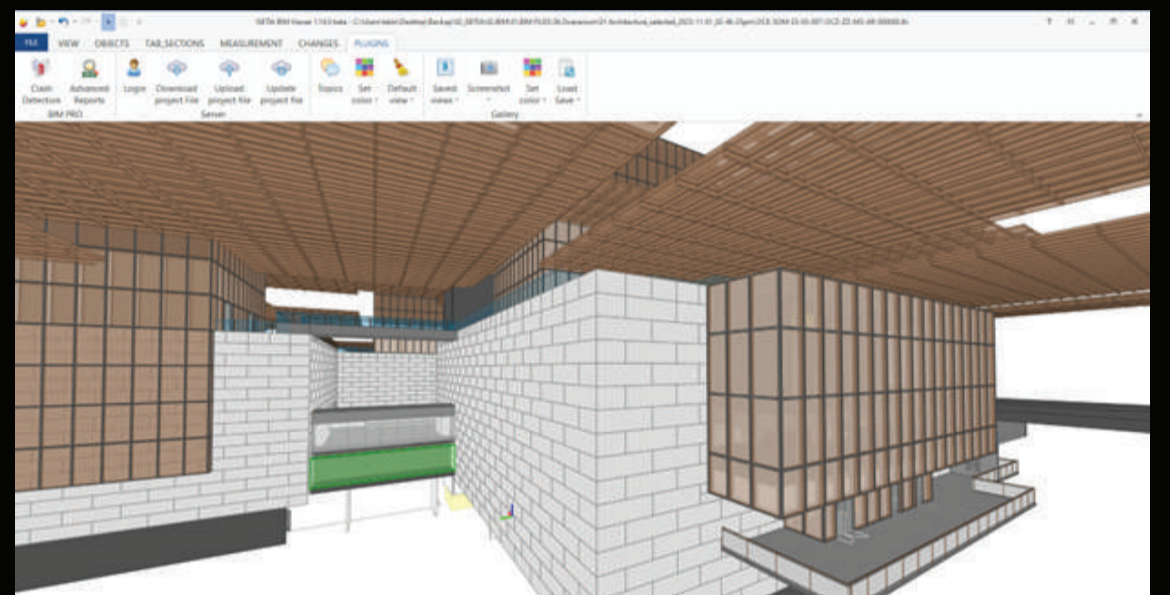
4. Object Management: The viewer allows for detailed interaction with objects in the model, including selection, transparency adjustment, and detailed property viewing.

5. Measurement Tools: It provides comprehensive measurement options, allowing for precise measurement of different elements within the model.

6. Model Comparison: Users can compare different versions of IFC files to observe changes in geometry, making it easier to track modifications over time.

7. Commenting and Collaboration: The viewer integrates with ISETIA for adding, viewing, and sharing annotations (comments) with the IFC model, enhancing collaboration among team members.

8. Automatic Updates: The program checks for and installs updates automatically, ensuring users always have the latest features and improvements.



The ISETIA BIM Viewer is a powerful tool for professionals who need to interact with and analyze building information models, particularly those working in architecture, engineering, construction, and related fields. Its robust feature set and user-friendly interface make it a valuable asset for anyone working with IFC files.

Advantages of ISETIA BIM Viewer:

1. Free of Charge: It's accessible without any financial commitment, making it an excellent option for individuals and organizations looking to explore BIM capabilities without upfront costs.

2. Supports Open BIM and Open IFC Formats: Ensures compatibility with widely used industry standards, facilitating easier collaboration and data exchange.

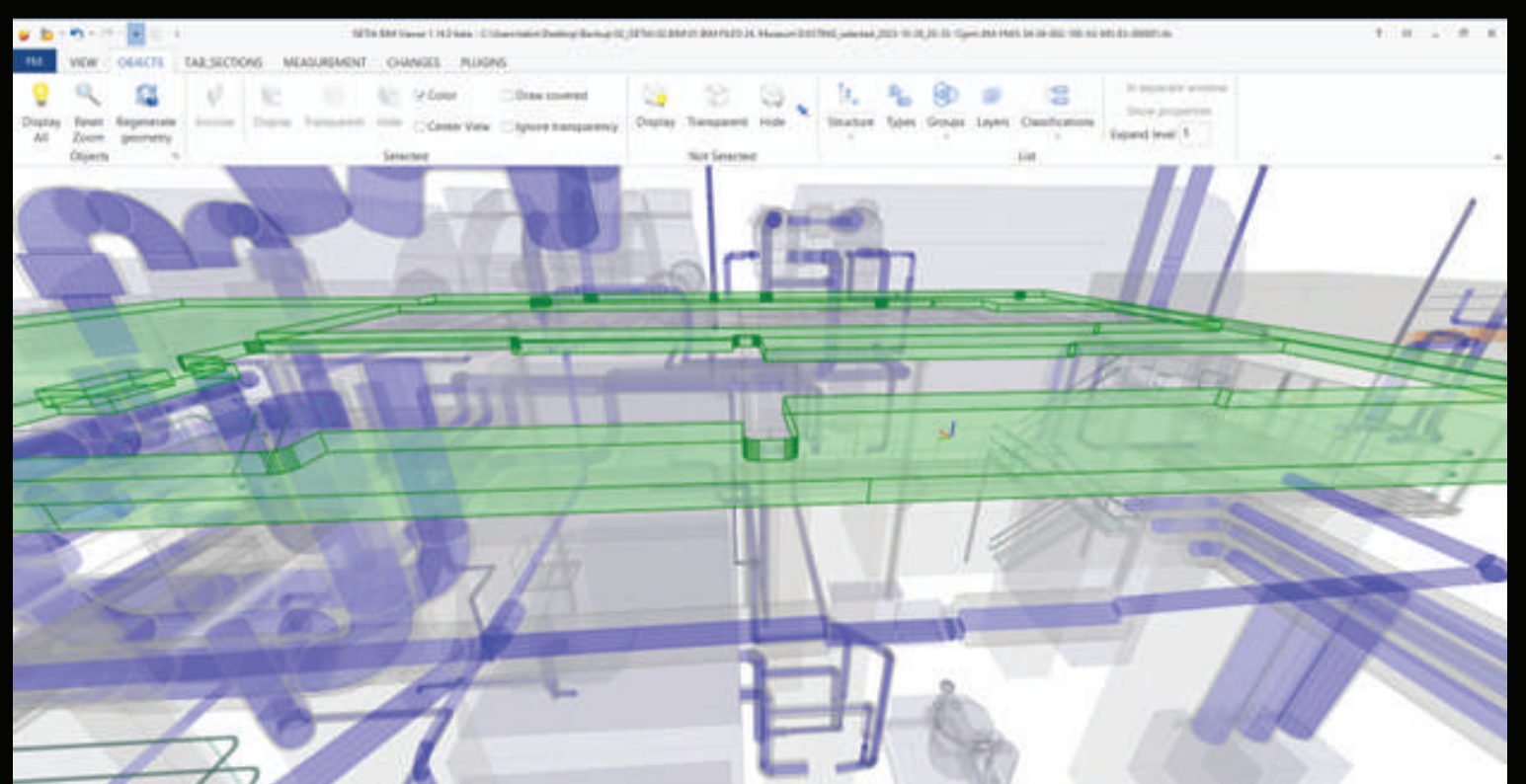
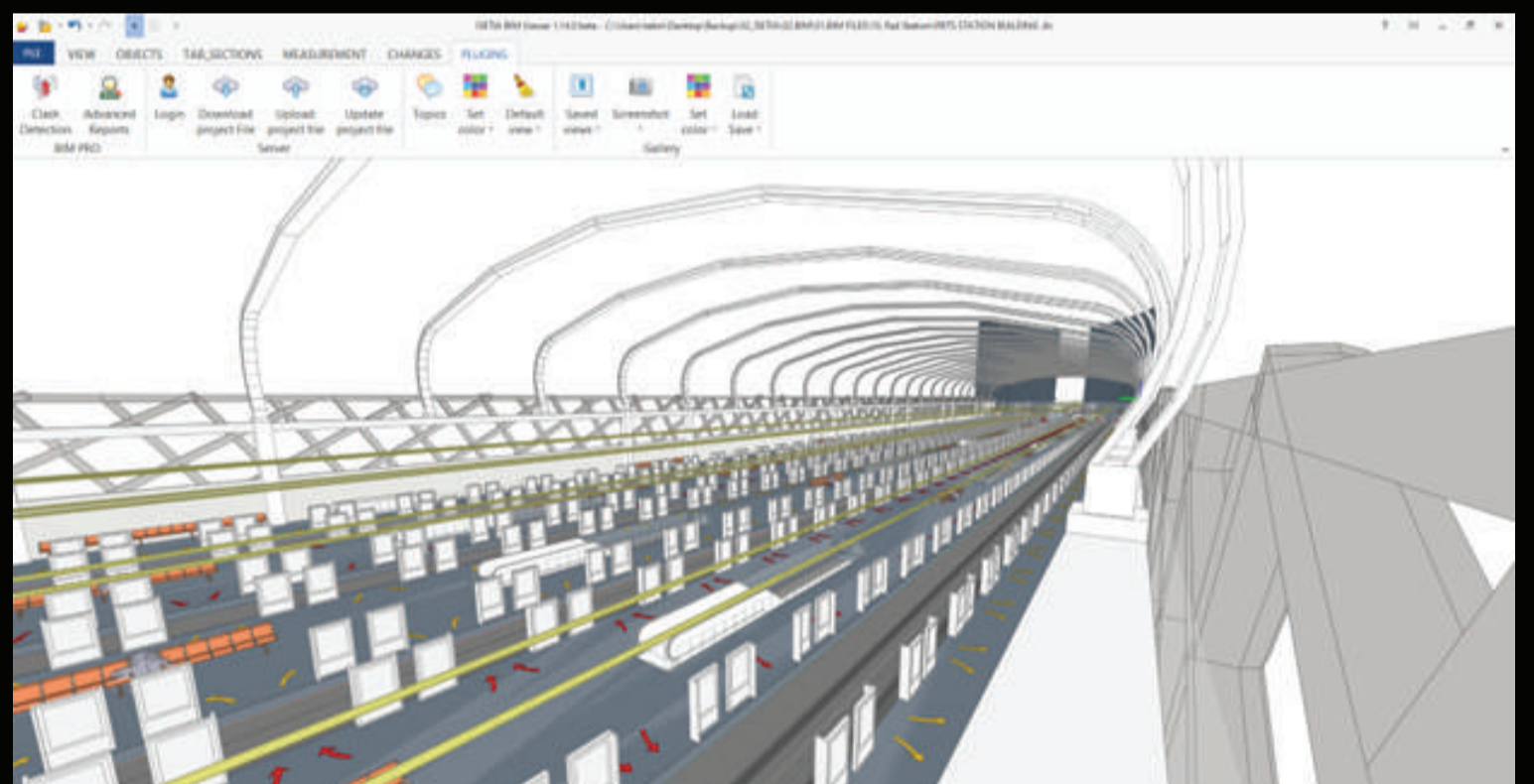
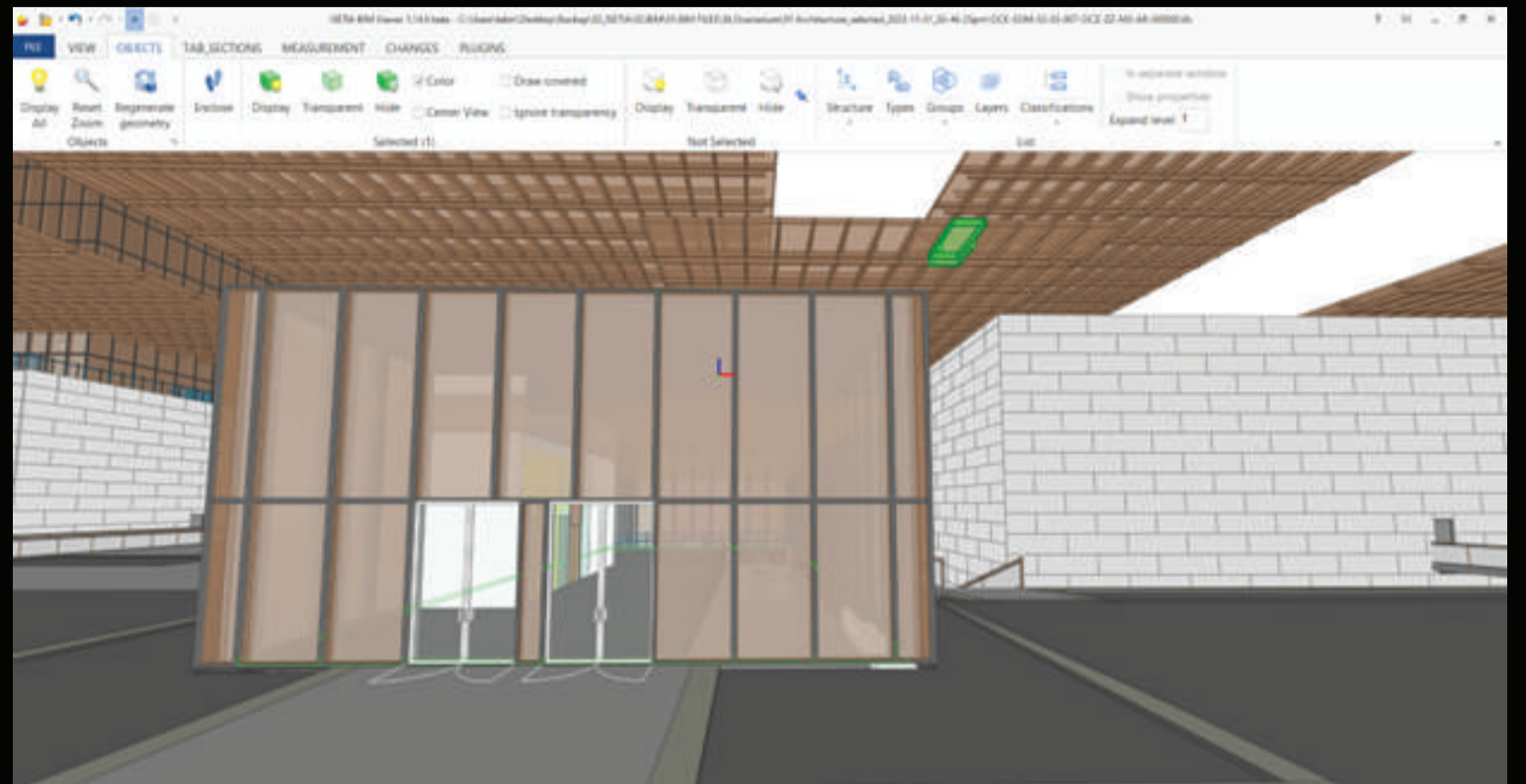
3. Ease of Use: Enables users to open IFC files, navigate, measure, understand, and analyze IFC documents without requiring extensive training.

4. No Time Limit for Usage: Users can download, install, and use the viewer indefinitely, with no hidden fees or time constraints.

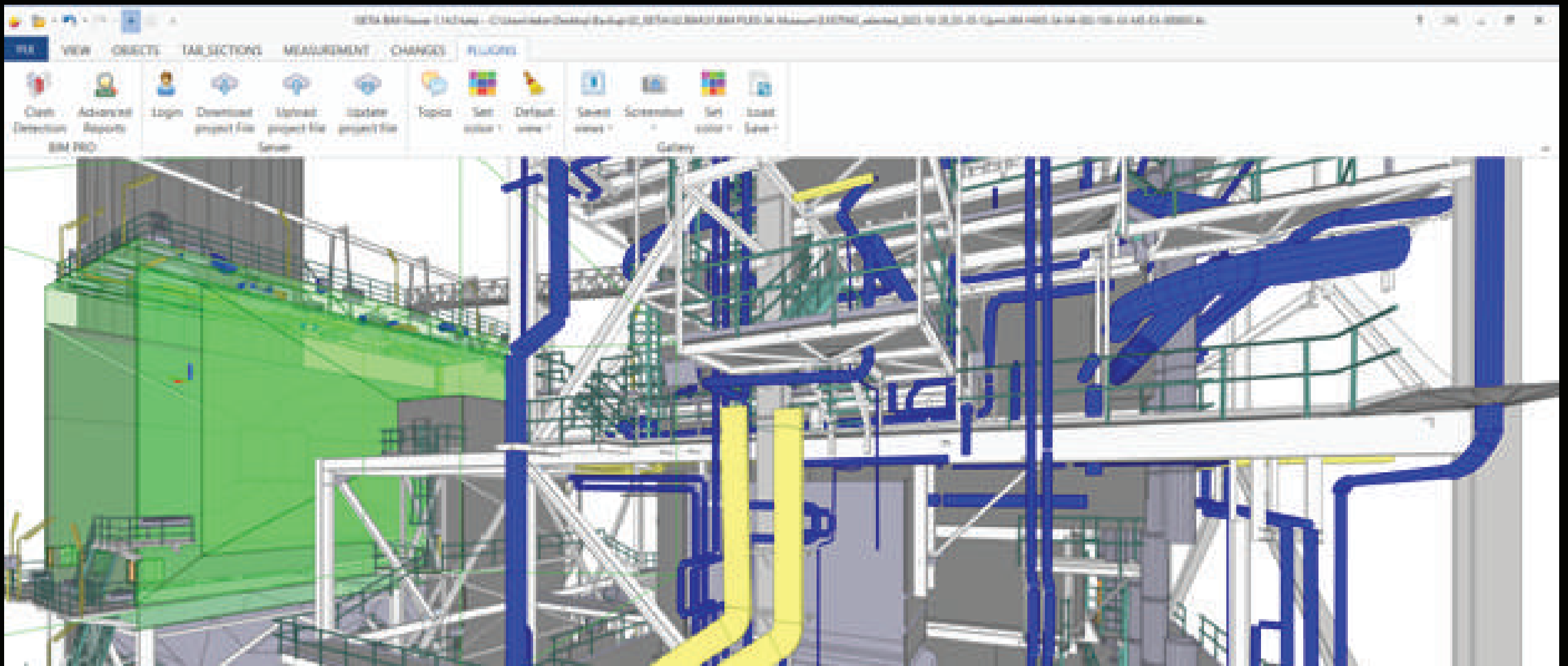
5. No Credit Card or Payment Commitment Required: Lowers the barrier to entry, as there's no financial information needed to start using the tool.

6. Wide Adoption: Already used by over 500,000 active users in more than 80 countries, indicating its effectiveness and reliability.

7. Diverse Functionalities: Helps in understanding complex building models, making measurements, and conducting in-depth analyses.



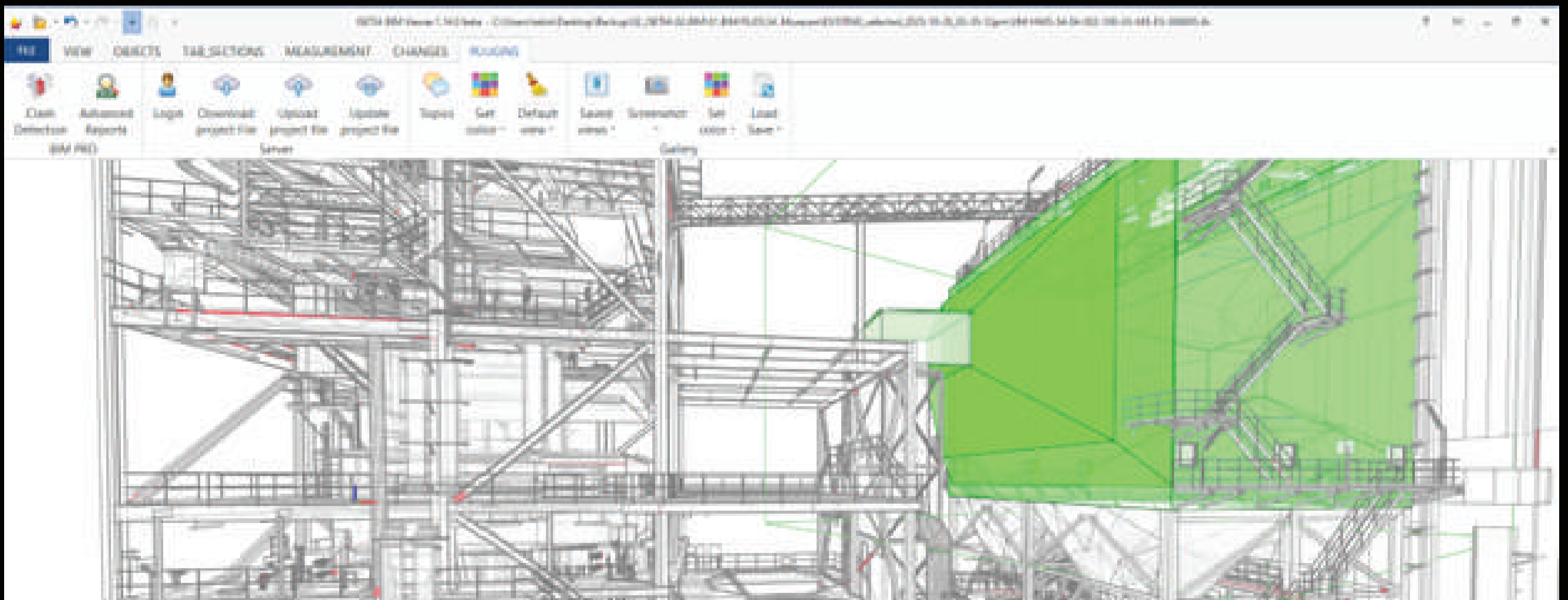
ISETIA **BIM**
VIEWER



Potential Users:

- 1. Architects:** For designing and visualizing complex structures.
- 2. Engineers:** Useful in structural analysis and ensuring compliance with design specifications.
- 3. BIM Experts:** Essential for managing and manipulating BIM data.
- 4. BIM Managers:** For overseeing BIM projects and coordinating teams.
- 5. Project Directors:** Useful in planning, overseeing, and executing large construction projects.
- 6. Team Members in AEC:** For collaborative review and understanding of project designs.
- 7. Project Owners:** Helps in visualizing the final product and making informed decisions.
- 8. General Contractors:** For construction management, scheduling, and logistics.
- 9. Designers:** Essential for creating detailed BIM models.
- 10. Subcontractors:** For understanding specific parts of the project and planning their work accordingly.

This comprehensive and accessible tool can significantly contribute to the efficiency and effectiveness of various stakeholders in the AEC industry. By offering a user-friendly, cost-free solution, the ISETIA BIM Viewer is well-positioned to be a beneficial tool for a wide range of professionals.





To get started with the ISETIA BIM Viewer:

- 1. Download the Viewer:** Look for the official download link from the ISETIA website or authorized distributors.
- 2. Installation:** Follow the provided instructions to install the viewer on your PC.
- 3. Start Using:** Once installed, you can immediately begin using the viewer to open, analyze, and work with IFC files.

Remember, there is no financial commitment or need for credit card details to start using the ISETIA BIM Viewer. It's an opportunity to experience a robust BIM tool without any initial investment.

Don't wait any longer, download and start using your ISETIA BIM Viewer today to enhance your BIM project management capabilities!



DOWNLOAD AND START USING YOUR ISETIA BIM VIEWER

<https://isetia.com/bim-viewer/#viewer>

